







**£325,000**

Tucked away within a quiet cul-de-sac location this three bedroom family home has many benefits including two reception rooms, kitchen, family bathroom and additional downstairs cloakroom, garden, driveway parking and garage.

# Property Description

## ENTRANCE

Door to:

## ENTRANCE HALL

Radiator.

## CLOAKROOM

Double glazed frosted window to front aspect. Low level WC, wall-mounted wash hand basin, radiator.

## LOUNGE

Double glazed window to front aspect, double glazed sliding door to rear. Two radiators, electric feature fireplace, stairs rising to first floor.

## CONSERVATORY

Double glazed windows to side and rear aspects, double glazed double doors to side. Radiator, space for fridge freezer.

## KITCHEN

Fitted with a range of wall-mounted and floor standing units with work surface over, stainless steel sink unit with mixer tap and drainer, space for cooker with extractor fan over, plumbing for washing machine, space for dishwasher.

## LANDING

Access to loft space, doors to bedrooms and bathroom, radiator.

## BEDROOM ONE

Double glazed window to rear aspect. Radiator, built-in wardrobe.

## BEDROOM TWO

Double glazed window to rear aspect. Radiator.

## BEDROOM THREE

Double glazed window to front aspect. Radiator.

## BATHROOM

Double glazed frosted window to front aspect. Low level WC, pedestal wash hand basin, panelled bath with shower over, airing cupboard housing wall-mounted combi boiler, heated towel rail.

## OUTSIDE

## GARAGE/PARKING

Garage with metal up and over door, power and lighting. Driveway parking for two cars.

## FRONT GARDEN

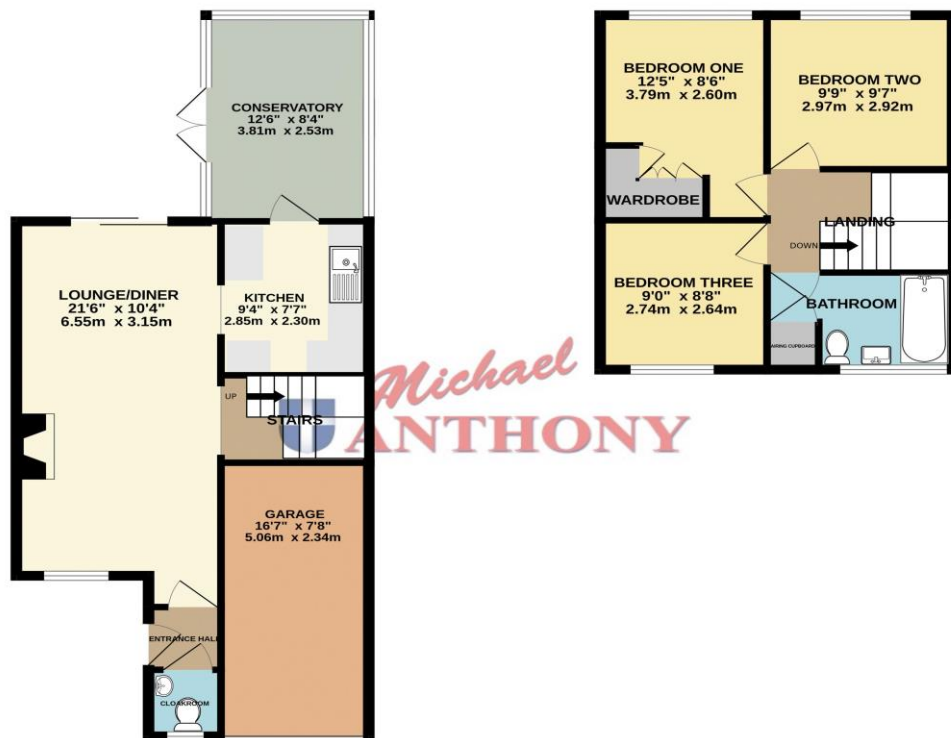
Hardstanding pathway leading to front door.

## REAR GARDEN

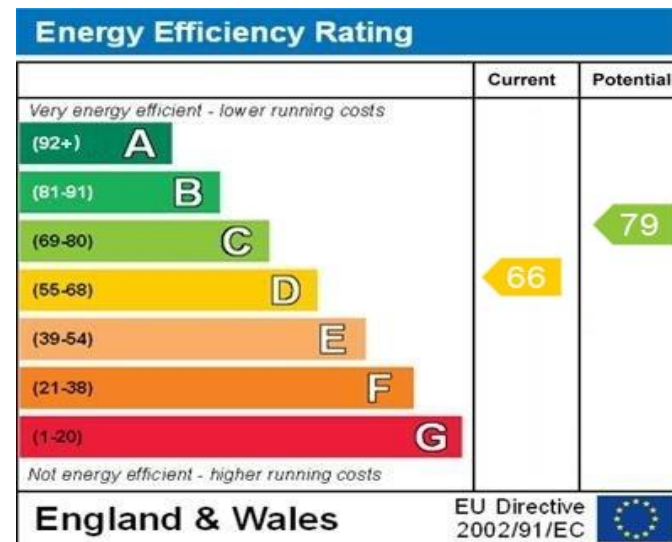
Mainly laid to lawn surrounded by panel fencing, gated side access, flower and shrub beds, cold water tap, outside light.

GROUND FLOOR  
594 sq.ft. (55.2 sq.m.) approx.

1ST FLOOR  
387 sq.ft. (36.0 sq.m.) approx.



TOTAL FLOOR AREA: 981 sq.ft. (91.1 sq.m.) approx.  
Whilst every attempt has been made to ensure the accuracy of the foregoing contained herein, measurements of doors, windows, rooms and any other items are approximate and no responsibility is taken for any error, omission or misstatement. This plan is for illustrative purposes only and should be used as such by any prospective purchaser. The services, systems and appliances shown have not been tested and no guarantee as to their operability or efficiency can be given.  
Made with Metropix ©2025



WWW.EPC4U.COM

MONEY LAUNDERING REGULATIONS 2017 intending purchasers will be asked to produce identification and proof of financial status when an offer is received. We would ask for your co-operation in order that there will be no delay in agreeing the sale.

THE CONSUMER PROTECTION REGULATIONS 2008 The Agent has not tested any apparatus, equipment, fixtures and fittings or services and so cannot verify that they are in working order or fit for the purpose. A Buyer is advised to obtain verification from their Solicitor or Surveyor. References to the Tenure of a Property are based on information supplied by the Seller. The Agent has not had sight of the title documents. A Buyer is advised to obtain verification from their Solicitor. You are advised to check the availability of this property before travelling any distance to view. We have taken every precaution to ensure that these details are accurate and not misleading. If there is any point which is of particular importance to you, please contact us and we will provide any information you require. This is advisable, particularly if you intend to travel some distance to view the property. The mention of any appliances and services within these details does not imply that they are in full and efficient working order. These particulars are in draft form awaiting Vendors confirmation of their accuracy. These details must therefore be taken as a guide only and approved details should be requested from the agents

209A Witan Gate Sovereign Court Milton Keynes Buckinghamshire MK9 2HP  
01908 393 553 | miltonkeynes@maea.co.uk